



MYLAB™ VET PRODUCT LINE

# *MyLab™ X7VET* **THE PERFECT CHOICE**

Extremely intuitive and user-friendly veterinary interface offering outstanding image quality which adds extra value to your exams.

LED monitor with IPS technology allowing you to capture every single detail.



NEVER STOP ELEVATING YOUR VET EXPERIENCE.



# MyLab<sup>TM</sup>X7 VET



**Dedicated VET software and probes**



**Windows<sup>®</sup> 10**



**Quick start-up**



**Full-screen visualization**



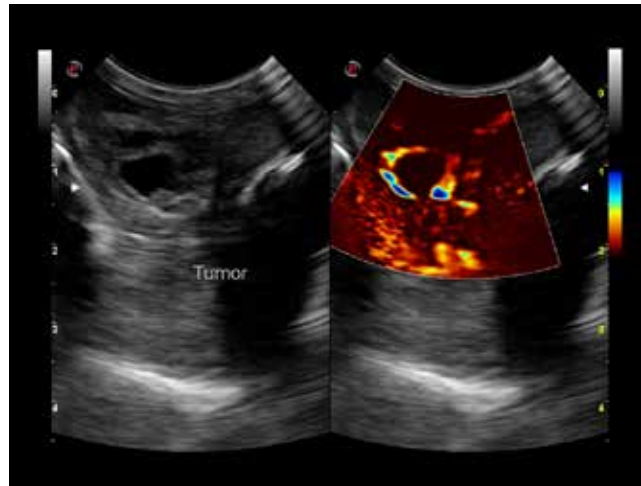
**Highly responsive capacitive touchscreen**



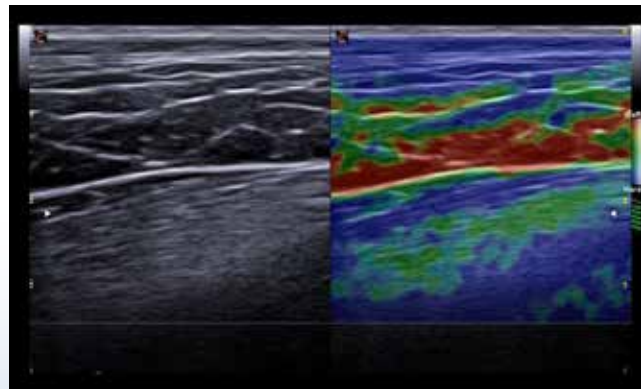
**Large probe portfolio**



**Microvascularization detection with microV**



Dog - Testis tumor - microV



Dog - Quadriceps femoris - ElaXto

- **22 MHz probe** with high-resolution images
- **Zero-click EF** - automatic ejection fraction computation
- **XStrain<sup>TM</sup>** - endocardial velocity quantification & heart deformation detection
- **ElaXto** - non-invasive assessment of tissue elasticity
- **CnTI<sup>TM</sup>** - advanced technology for Contrast Enhanced Ultrasound (CEUS) imaging
- **QPack** - multimodality quantification tool for CnTI<sup>TM</sup>, Color & Power Doppler
- **Extensive connectivity** - advanced allow sharing of ultrasound exams with others even on tablets and portable devices

160000181MA Ver.02

Esaote S.p.A. - sole-shareholder company  
Via Enrico Meloni 77, 16152 Genova, ITALY, Tel. +39 010 6547 1, Fax +39 010 6547 275, info@esaote.com

Windows<sup>®</sup> is a registered trademark of Microsoft Corporation. MyLab is a trademark of Esaote spa.  
Technology and features are system/configuration dependent. Specifications subject to change without notice. Information might refer to products or modalities not yet approved in all countries.  
Product images are for illustrative purposes only. For further details, please contact your Esaote sales representative.