



NEVER STOP ELEVATING

YOUR VET EXPERIENCE.

MYLAB™ VET PRODUCT LINE

MyLab™ X5VET **EXPERIENCE** **EFFICIENCY**

Quick responsiveness, advanced technology and easy to use interface maximize your diagnostic efficiency.

Zero-click technology helps save you time and advanced imaging quality helps you diagnose with confidence.



NEVER STOP ELEVATING YOUR VET EXPERIENCE.



MyLabTMX5 VET



Dedicated VET software and probes



Windows[®] 10



Full-screen visualization



Highly responsive capacitive touchscreen



Large probe portfolio

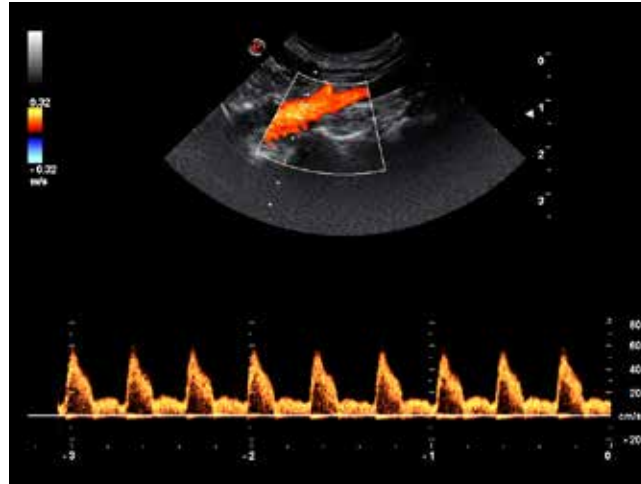


Diagnostic confidence



Esaote S.p.A. - sole-shareholder company
Via Enrico Meloni 77, 16152 Genova, ITALY, Tel. +39 010 6547 1, Fax +39 010 6547 275, info@esaote.com

Windows[®] is a registered trademark of Microsoft Corporation. MyLab is a trademark of Esaote spa.
Technology and features are system/configuration dependent. Specifications subject to change without notice. Information might refer to products or modalities not yet approved in all countries.
Product images are for illustrative purposes only. For further details, please contact your Esaote sales representative.



Cat - Artery - PW



Dog - Small bowel - B-Mode

- **High-definition B-Mode:** new software and technology to enhance image quality and increase all diagnostic details
- **Single-probe approach:** with just one probe you can make a complete medical imaging examination and simplify your everyday practice
- **XStrain2D and AutoEF:** advanced, affordable cardiological tools which are one of a kind
- **Extensive connectivity:** advanced features allow sharing of ultrasound exams with others, even on tablets and portable devices
- **Booting time** less than 15 seconds

160000182/MA Ver.01